



**GROWING**  
*smiles*

*Winter 2025*



**PRODUCT CATALOG**



---

# TABLE OF contents

---



Table of  
Contents



Legend



Benefits &  
Registration



How To:



Poinsettias Pt. 1



Poinsettias Pt. 2



Indoor Tropical  
Planters Pt. 1



Indoor Tropical  
Planters Pt. 2



Holiday  
Wreaths



Succulent Bowls



Table Top Trios



Hanging Greenery  
Baskets



Outdoor Greenery  
Arrangements Pt. 1



Outdoor Greenery  
Arrangements Pt. 2



Tropical 2-Pks



Testimonials



Social Media



Photo Contests

*\*Not all plants are available everywhere.  
Please reach out to your GSF rep. to see  
what plants are available in your area\**



# LEGEND



## Pet-friendly

Non-toxic for our furry friends



## Full Sun

Flourishes when exposed to direct sunlight for 5+ hours each day



## Part Sun

Requires 4-6 hours of indirect/morning/daily sunlight



## Ease of Care

Low maintenance for the busy-bees



## Indoor

Keep indoors



## Outdoor

Keep outdoors





# INSPIRE CHANGE. CREATE COMMUNITY.

CLASSROOMS • PLAYGROUNDS • JERSEYS • TRIPS • CHARITIES  
MEDICAL TREATMENT • BOOSTER CLUBS • GRAD COMMITTEES • CAMP

## Benefits of *Plants*



Boosts  
productivity



Improves  
mental-health



Reduces  
stress-levels



Removes toxins and  
purifies the air

EVERY ONE OF YOU, YOUR  
CAUSES, AND  
YOUR STORIES, ARE  
WHAT DRIVE OUR TEAM AND  
OUR PROGRAM.

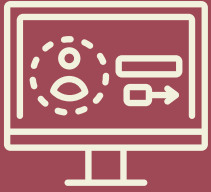


Offer a healthy, alternative way to raise money! You get  
free selling websites, sales coaching, direct delivery and  
excellent profit margins.



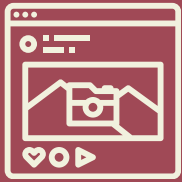
# How To:

## *run a successful fundraiser*



Create an account and/or get registered to run a seasonal fundraiser.

Pick a delivery date and begin to set up your team website.



Launch your website and start sending out order forms and advertise on social media and through email.

Place your team's order on the team website 14 days prior to your delivery date.



Delivery day!

We will deliver your plants to the location you requested.

Sort and hand out the orders to all of your customers.



Enjoy your profits!





# Poinsettias

A CLASSIC  
ADDITION  
TO YOUR  
HOLIDAY  
DECOR





---

**Our #1 Holiday favorite!**

**Brighten up any room with a colorful poinsettia.  
Arrives ready to display in a color-coordinated pot  
cover. Poinsettias are the perfect festive touch for the  
holidays.**

---



## CARE TIPS |

- The 6.5" Poinsettias like ~1 cup of lukewarm water whenever the soil feels dry to touch. Do not let plants sit in the water
- Need a minimum of 6 hours of indirect sunlight each day. You can place them where the sun filters through blinds
- After the plant blooms, fertilize with a balance, all-purpose fertilizer
- Will thrive in room temperatures between 20°-21° C (68°-70° F). Do not expose to winds, drafts, excessive heat, and cold temperatures
- Approx. Height: 6.5": 14-16", 10": 20-24"  
Width: 6.5": 12-16", 10": 20-24"

*\*available everywhere\**

[www.growingsmilesfundraising.com](http://www.growingsmilesfundraising.com)



# Indoor Tropical Planter

ADD A BIT OF  
CLASS WITH  
SIMPLE  
COLOURS





---

**A must-have for everyone!**  
**A selection of holiday-colored Tropicals featured in a beautiful holiday-themed tin planter will be the best decision you make this Winter.**

**Possible Varieties include:**

*Croton: petra, Sedum: coral reef, Pilea: red stem, Ivy, Kalanchoes (red, white, yellow, or orange), Neanthe Belle Palm, Mini Cypress, Gaultheria, Frosty Fern*

---



## CARE TIPS



- Tropicals do not need lots of water. Wait until soil on top 2" has dried completely before watering again
- Prefer indirect sunlight. Tropical plants can burn if there is direct sunlight. Light through partially closed blinds is recommended
- Benefits from periodic fertilizing. Can be fertilized every 2-3 weeks from Spring to Summer and every 3-4 weeks during Winter
- Prefer a high acidic, loose, well-draining soil that is high in organic matter
- Thrives in humid/warm locations. They do not do very well under 15°C or in drafty conditions
- Approx. Plant Height: 14-16"; Tin Planter Length: 11", Width: 7"

*\*available everywhere\**

[www.growingsmilesfundraising.com](http://www.growingsmilesfundraising.com)



# Holiday Wreath

THE  
OUTDOOR  
MUST-  
HAVE



**Seasons Greetings!**

**High-quality sourced live greenery that is hand-tied and dipped for extended freshness.**

**Complimenting the greenery are red berries, pine cones, and bows.**

**Possible Varieties Include:**

*Noble Fir, Juniper Berries, Pine Cones, Novelty Berries, Red Ribbons*

## CARE TIPS



- Mist the wreath generously a few times throughout the week
- Does not need light to thrive, but needs to be protected from the wind
- Is meant to be outdoors, but if displayed indoors, be sure to mist more to prevent the wreath from drying out
- Approx. Diameter: 24"

*\*available everywhere\**

[www.growingsmilesfundraising.com](http://www.growingsmilesfundraising.com)



# Succulent Bowl



**The perfect gift that goes well in any home!**  
**This popular succulent arrangement is featured in a classy white ceramic bowl.**

AN EASY  
ADDITION  
TO YOUR  
HOLIDAY  
TABLE

Possible Varieties Include:

*Echevaria- Perle Von Nurnburg, Miranda Red, Purpusorum, Affins and Pulidonis. Sedum/Sedeveria- Hens and chicks, Hako Chocokate Ball, Tetractinum Coal Reef, and Lemon Angelina. Senecio (not pet-friendly)- Mandraliscae "Blue"*

## CARE TIPS |

- Succulents don't like being over-watered. Let them dry out before watering. Sometimes the bathroom may have too much moisture for them to thrive
- Full sunlight is preferred all the time. Rotate succulents every 2 weeks for all to get adequate light
- Fertilize with a balanced fertilizer once in the Spring and once in the Summer
- Succulents prefer porous sandy soil that is well-draining
- Place outside when temperatures reach 15°C (they can handle heat very well)
- Approx. Height: 10-12". The ceramic bowl is 9" in diameter.

*\*NOT available everywhere\**

*Please reach out to your GSF rep to see if this product is available in your area*

[www.growingsmilesfundraising.com](http://www.growingsmilesfundraising.com)

10



# Table Top Trier



## THE PERFECT READY- MADE GIFT

A simple favorite in our holiday product line-up!  
Novelty picks, pot covers, and bows complete  
this festive table topper.

Possible Varieties include:

*Mini Cypress, Gaultheria, Frosty Fern, Lemon Cypress*

## CARE TIPS |

- Water well when the soil feels dry to the touch. Remove pot covers to drain - do not let plants sit in excess water
- Prefers indirect sunlight at least 6 hours each day
- Fertilize with a balanced, all-purpose fertilizer at the end of the season
- Protect from any wind and extreme temperatures. Keep indoors close to 20°C or warmer
- All pots are ~4" in diameter
- Gaultheria Approx. Height: 6", Width: 4-5"  
Frosty Fern Approx. Height: 6", Width: 4-5"  
Cypress Approx. Height: 10-13", Width: 4"

*\*NOT available everywhere\**

*Please reach out to your GSF rep to see if this  
product is available in your area*

[www.growingsmilesfundraising.com](http://www.growingsmilesfundraising.com)





Hanging  
Greenery Bough

UNIQUE  
HANGING  
DECOR

**Celebrate with a merry bough of greenery!**  
**Hanging on the outside of your front door or leaning on the patio, this premium arrangement of greenery will catch everyone's eye. Featured in a vintage style burlap bag.**

**Possible Varieties include:**

*Noble Firs, Princess Pine, Gaultheria, Bow Western, Red Cedar*

## CARE TIPS |



- Mist a few times a week with a spray bottle until you see water beads
- Does not need light to thrive, but should be protected from wind
- Keep outside as it will dry out and turn brown if left indoors
- Approx. Height: 30-36", Width: 10-13"

*\*available everywhere\**

[www.growingsmilesfundraising.com](http://www.growingsmilesfundraising.com)

12



# Outdoor Greenery Arrangement

A LARGE  
FESTIVE  
GREENERY  
ARRANGEMENT





---

Welcome guests to your home in-style!  
This planter features a large display of live greenery in a simple pot. With a burst of color from bows and berries you and your guests will love looking at this arrangement.

---



## CARE TIPS |

- Keep the branch stems submerged in water and check water levels daily
- Does not need light to thrive, but should be protected from wind
- Meant to be outdoors but if it is displayed indoors, be sure to check water levels daily
- Approx. Height: 30-36", Width: 16-20"

*\*available everywhere\**





## SEE WHAT TEAMS SAY

"This couldn't be an easier fundraiser.  
Everything is recorded, tracked, and  
communicated!

Would lead this fundraiser again in a heartbeat."

Danielle - Lethbridge, AB



"These plants sell themselves!

This is our most successful fundraiser by far. Growing  
Smiles Fundraising staff are fantastic, the drivers are  
helpful, and we look forward to working with them  
again next season."

Alesha - Okotoks, AB



"Great fundraiser to run!

So many great resources to assist a group with selling  
the products. The whole process is seamless! The  
products themselves are gorgeous. A really good  
fundraiser to raise money!"

Nuala - Grande Prairie, AB





# Join Us Online

Join us on Facebook for our Greenhouse Live series, and get an inside look at where our beautiful plants are grown, while learning more about how to run a successful fundraiser!



[facebook.com/growingsmilesfundraising](https://facebook.com/growingsmilesfundraising)



Join us on Instagram for all the latest Growing Smiles updates, important date reminders, contests, and to learn even more about our Summer/Fall flowers and plants!



[instagram.com/growingsmilesfundraising](https://instagram.com/growingsmilesfundraising)





# Photo Contests

We encourage you to continue sharing your love for plants by sending in photos by email or tagging us on social media posts. Our photo contest gives you the chance to win up to \$100!

Don't forget to have fun and be creative!



Winter



Spring



Summer

*\*Please note that we may use submitted photos on our website, on our social media pages, and/or in other small promotions.*





# CONTACT

[www.growingsmilesfundraising.com](http://www.growingsmilesfundraising.com)

1-866-806-1523

[info@growingsmilesfundraising.com](mailto:info@growingsmilesfundraising.com)

49150 CASTLEMAN ROAD,  
CHILLIWACK BC, V2P 6H4  
CANADA



GROWING  
*smiles*